

FEATURES

- Reliable solution without power supply
- Smooth flicker-free dimming to 0,1%
- Practically no inrush current
- Warm dim version available



Lens
HV-FD 40°

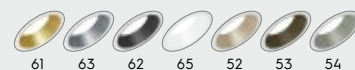
Diffuser
HV-FD 80°

SPRINGS

Standard with CS spring (concrete/gyproc). Also available as above with WS spring (gyproc/metal).

COLOURS

Available colours:



Nr	Housing	Ring
	RAL 9016	
XX=61	Matt white	Gold
XX=63	Matt white	Silver
XX=62	Matt white	Black
XX=65	Matt white	White
XX=52	Matt white	Beige
XX=53	Matt white	Bronze
XX=54	Matt white	Green



Nr	Housing	Ring
	RAL 9005	
XX=71	Matt black	Gold
XX=74	Matt black	Silver
XX=72	Matt black	Black
XX=76	Matt black	White
XX=70	Matt black	Beige
XX=78	Matt black	Bronze
XX=79	Matt black	Green

Strada 90 HV-FD

Adjustable

DRIVERLESS

Can be connected
directly to
220-240V

SPECIFICATIONS

Input voltage	220-240Vac
Beam angle (FWHM)	40° / 80°
Fixture material	Housing: Die cast aluminium / Reflector glass: Polycarbonate
Environment	Indoor
IK rate	IK03
Inrush current (peak / duration)	<100mA / 0 µs (soft start)
Max. quantity per type B 16A	360 pcs.
Mains surge capability (between L - N)	2 kV (differential mode (DM))
Mains surge capability (between L/N - PE)	4 kV (common mode (CM))
% Flicker (Conform IEEE P1789 Standard)	Typical 0,4%
Flicker index	<0,1
Dimming range	100-0,1%
THD	15%
Operating temperature (Ta)	-20°C / +45°C 1
Safety marks	EN60598 / EN62031 / EN62471
EMC compliance	EN55015
Colour consistency (SDCM)	MacAdam step 3
Warranty	7 years * (within the European Union and the countries of the Free Trade Association for products delivered after 1 May 2015)
Energy class	These products contain a light source of energy efficiency class F

This luminaire contains built-in LED lamps. There are no exchangeable parts inside the luminaire. EU 874/2012



IP20

STRADA 90 220-240V



Connection box 3P
82x43x26 mm
Possibility for looping by 2 cables
max. Ø 10mm (H03/H05).

ITEM SPECIFICATIONS (PART A)

Description	Item code CS	Item code WS	Input	W	Lm	Lm/W	CRI (typ.)	UGR	Pf
Strada 90 HV-FD 2700K 800 Lm 40° Triac dim	852B03XX5A02	852B03XX8A02	220-240V	10,5	800	76	93	15.7	0.99
Strada 90 HV-FD 3000K 800 Lm 40° Triac dim	852B03XX5C02	852B03XX8C02	220-240V	10,3	800	78	93	15.7	0.99
Strada 90 HV-FD 4000K 800 Lm 40° Triac dim	852B03XX5E02	852B03XX8E02	220-240V	10,1	800	79	93	15.7	0.99
Strada 90 HV-FD 2200-3000K 800 Lm 40° Triac dim	852B03XX5G02	852B03XX8G02	220-240V	10,3	800	78	93	15.7	0.99
Strada 90 HV-FD 2700K 800 Lm 80° Triac dim	852B03XX5B02	852B03XX8B02	220-240V	10,5	800	76	93	26.9	0.99
Strada 90 HV-FD 3000K 800 Lm 80° Triac dim	852B03XX5D02	852B03XX8D02	220-240V	10,3	800	78	93	26.9	0.99
Strada 90 HV-FD 4000K 800 Lm 80° Triac dim	852B03XX5F02	852B03XX8F02	220-240V	10,1	800	79	93	26.9	0.99
Strada 90 HV-FD 2200-3000K 800 Lm 80° Triac dim	852B03XX5H02	852B03XX8H02	220-240V	10,3	800	78	93	26.9	0.99

ITEM SPECIFICATIONS (PART B)

Description	Safety class	Energy class	Weight	Dimensions single carton	Quantity per carton
Strada 90 HV-FD 40°	I	F	390 gr	105x115x105 mm	45 pcs
Strada 90 HV-FD 80°	I	F	390 gr	105x115x105 mm	45 pcs

ITEM SPECIFICATIONS (PART C)

Description	Expected Lifetime			Reported Lifetime*		
	L70B10	L80B10	L90B10	L70B10	L80B10	L90B10
Strada 90 HV-FD	173.000 hrs	111.000 hrs	55.000 hrs	>102.000 hrs	>102.000 hrs	>55.000 hrs

All values are measured at 230V (+/- 7%). * Based on 19.000hrs of LM80 testing at 1200mA and a Tc85°C.

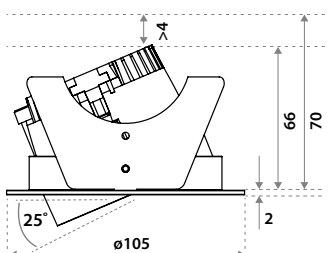
FIRE RATING TUBE

Description	Item code	Cut-out	time
Fire rating tube 90	009D03MW0000	ø94x70mm	90 min.



⚠ Only in combination with WS (wire) springs versions.

DIMENSIONS



CUT-OUT



Using CS springs: Ø 90 mm.
Thickness ceiling 5-70 mm
& recess depth 70 mm.



Using WS springs. Ø 92 mm.
Thickness ceiling 1-50 mm
& recess depth 70 mm.

RECOMMENDED DIMMER LIST ILLUXTRON HV-FD DOWNLIGHTS

	Manufacturer	Product ID	Type	Power	Neutral	RCS	Range	
	Flush mounted dimmers				1)	2)	min	max
1	ABB-Busch&Jaeger	6523 UR 103	RLC	2-400	X	x	0,2	100
2	CTM Lyng	MDimLed	LED	1-200	Y	x	0,0	100
3	Gira Berker Jung	1183 00/101	RL	20-500	X	?	0,0	99
4	Gira Berker Jung	1184 00/101	R	60-200	X	x	0,2	97
5	Legrand	0 02671	LED	3-75	Y	?	6,3	96
6	Legrand (Btinico)	L-N-NT4411N	LED	3-75	X	?	3,4	95
7	Lumiko /Klemko	D-PAF-200-LED	RC	1-200	X	x	0,0	98
8	Lutron	RRK-R25NE-240	LED	1-250	Y	x	0,1	98
9	Niko	310-0190X	Uni	5-325	Y	✓	0,0	98
10	Niko	310-0290X	LED	3-300	X	✓	0,1	99
11	Niko	310-0390X	Uni	3-200	X	✓	0,0	95
14	Feller	40600 RL	RL	20-300	X	x	0,0	96
15	Merten	SBD SPL	RL	9-100	X	?	0,2	100
16	Merten	SBD600 RL	RL	40-600	X	x	0,0	96
17	Simon Electric	DS9T2		5-315	Y	x	0,1	100
18	Unilamp/Belid	KDT 250 E-I	LED	5-250	X	?	0,7	98
19	Unilamp/Luzense	KTD-500 E4	LED	5-500	X	x	0,4	100
	Wireless remote controlled dimmers (Bluetooth, Zigbee, RF)				1)	2)	min	max
20	Casambi	CBU-TED Bluetooth	RC	1-100	Y	x	0,1	100
21	Dimmax (Trump)	420BLE	RLC	1-380	Y			
22	Eaton LED	CDAU-01/04	RLC	0-250	Y	x	2,0	100
23	RAKO	RMT-500	RC	1-500	Y	✓	0,0	100
24	RAKO	RMT-PILL	RC	1-250	Y	✓	0,1	98
	Wired remote control dimmers (pulse, Din-rail etc)				1)	2)	min	max
25	Dimmax (Trump)	420SL	RLC	1-200	Y	x	2,1	98
26	Eltako	EUD61NPN-UC	RLC	400	Y	x	2,9	95
27	Niko	330-0700(=330-0701)	LED	5-350	Y	✓	0,1	100
28	Qbus	Dim02SA/500	uni	2-500	Y	✓	0,1	100

 1) **Y** = neutral required; **X** = no neutral required

 2) **x** = sensitive to RCS signals e.g. flicker; **✓** = not sensitive to RCS

This list is based on measurements in a lab environment with nominal voltage, a different voltage may result in a different dimming range. Dimmermanufacturers may change the technical design of the dimmer without informing LED lamp suppliers. These changes can influence the performace of LED products. Illuxtron cannot be held responsible for inaccuracies in the compatibility lists due to technical changes in dimmers. Disclaimer: Illuxtron will not accept claims for any damage caused by implementing the recommendations in this document.